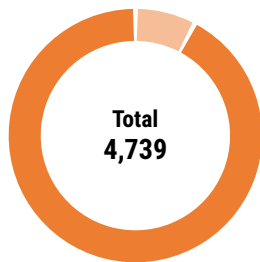


## FACTS AND FIGURES



Damage Status - Private Structures

## MAJOR HOUSING TYPOLOGIES

Typology	Municipal	District
Stone and Mud Mortar Masonry	96.07%	89.07%
Reinforced Cement Concrete (RCC) Frame	2.05%	3.05%
Brick and Cement Mortar Masonry	0.82%	2.11%
Stone and Cement Mortar Masonry	0.46%	0.64%
Others	0.58%	5.13%

CBS damage assessment survey, 2015

## HOUSING RECONSTRUCTION & RETROFIT UPDATES

### Reconstruction Status

Total Eligible HHs	4,364
PA Agreement	4,274 (90)
I <sup>st</sup> Tranche received	4,274 (90)
II <sup>nd</sup> Tranche received	4,119 (245)
III <sup>rd</sup> Tranche received	3,640 (724)

### Houses

Under Construction: - Completed: 3,568

### Retrofitting Status

Total Eligible HHs	152
PA Agreement	1 (151)
I <sup>st</sup> Tranche received	1 (151)
II <sup>nd</sup> Tranche received	- (152)

### Grievances

Registered: 511  
 Addressed: 448

### Non-compliances

Registered: -  
 Addressed: -

Data Updated on: 2019-06-24 00:00:00

## PO Presence

Active: No POs Reported

Phased Out: ACF (Agriculture) , ACF (DRM) , ACF (Health) , ACF (Hygiene) , GIZ (Health) , OXFAM-GB (Agriculture) , OXFAM-GB (Livelihood) , OXFAM-GB (Shelter) , OXFAM-GB (Hygiene) , PA (Shelter)

## STATUS OF CONSTRUCTION MATERIALS

Materials	Unit	Req. Quantity*	Ava.	Cost (NRs.)**
Stone	m <sup>3</sup>	97,915	Y	5,000
Aggregate	m <sup>3</sup>	99,205	N	9,000
Sand	m <sup>3</sup>	10,447	N	9,000
Timber	cu. ft.	12,026	Y	2,500
Cement (PPC)	Sack	-	Y	950
Cement (OPC)	Sack	331,544	Y	1,050
Rebars	kgs.	1,066,797	N	98
Tin	bundle	13,564	-	-
Bricks	pcs.	1,461,293	Y	18

### Types of Workers

1. Skilled mason
2. Labourer

### Avg. daily wage (NRs.)

1,500 /-  
 1,000 /-

## OTHER SECTORS



### Schools

Damaged: 29  
 Under Construction: 16  
 Construction Completed: 16



### Health Posts

Damaged: -  
 Under Construction: -  
 Construction Completed: -

## KEY CONTACTS

### Municipal Office

Asha Tamang  
 Mayor  
 9841759108

### Municipal Office

Raman Singh Tamang  
 Focal Person  
 9804584668

### Municipal Office

Shanti Lama Tamang  
 Deputy Mayor  
 9841548920

### DLPIU-GMaLI

Sambhu Kumar Shah  
 DLPIU-Chief  
 9847068897

### Municipal Office

Pramod Timilsina  
 Administration Officer  
 9851254032

### DLPIU-Building

Koshnath Adhikari  
 DLPIU-Chief  
 98550465884

## HHs WITH LAND ISSUES

No Reported Land Issues

## STATUS OF TECHNICAL STAFF

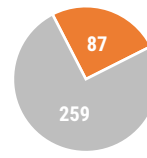
Staff	Available Nos.	Additional Req. Nos.
Engineers	-	-
Sub-Engineers	-	-
Asst. Sub-Engineers	-	-
Masons	- (7 days) - (50 days)	- (7 days) - (50 days)

Source: Municipal survey

## MASON TRAINING

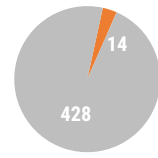
Trainings (# out of total required)

7 days Training



Reached

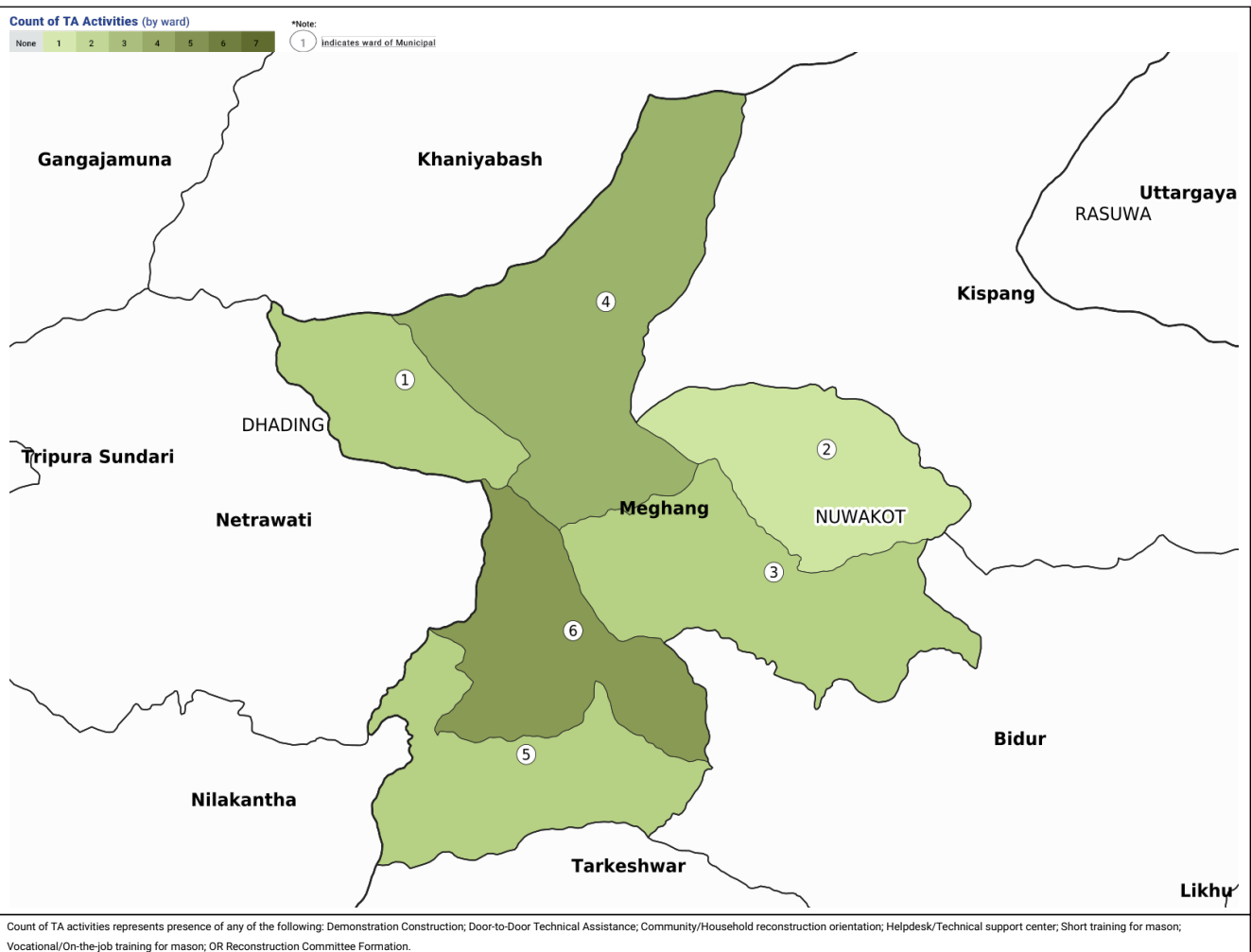
50 days Vocational Training



Remaining

Source: HRRP Analysis

## TA ACTIVITIES MAP



## FAQs

**Q: What documents are required for enrolment in the GoN housing reconstruction programme?**

A: Two copies of passport size photos and original copy and photocopy of land ownership card and citizenship card. Local officials at the Rural / Urban Municipality will be able to provide information and support and households can enrol at the Rural / Urban Municipality.

**Q: Do we need to pay the engineers when they come to conduct inspections or provide technical assistance?**

A: No, you do not have to pay the engineers, or any other staff, conducting inspections or providing technical assistance. If any field staff request payment for conducting inspection or providing technical assistance you should report it to the Rural / Urban Municipality officials.

For further information 1. Badri Pyakurel (District Coordinator) 2. (District Technical Officer) 3. Manisha Rai (District Information Management Officer)  
9851154201 9842062006